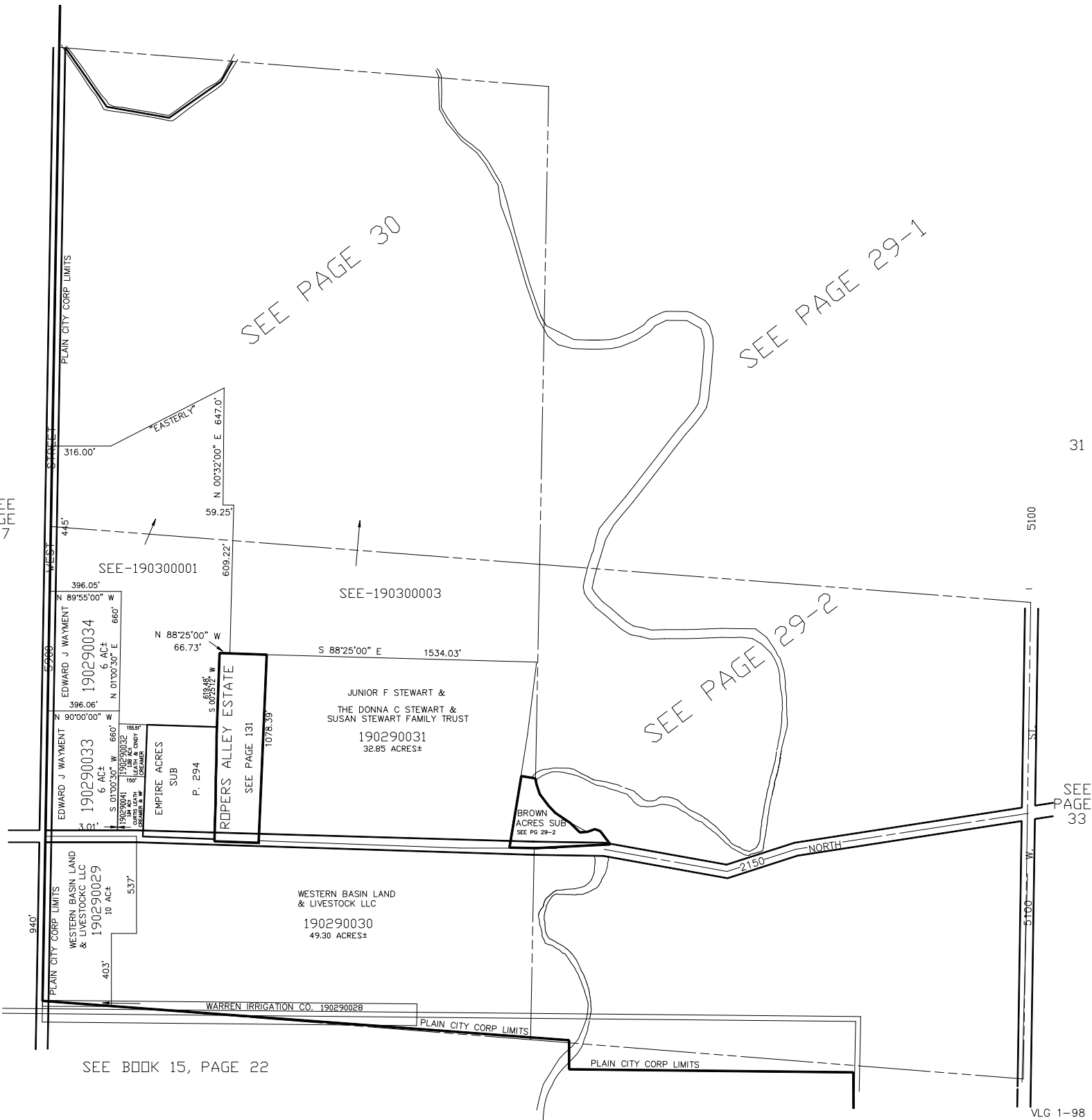


SECTION 31, T.7N.,R.2W., S.L.B.&M.

TAXING UNIT: 445

IN PLAIN CITY
SCALE 1" = 400'



SEE PAGE 30

SEE PAGE 29-1

SEE PAGE 29-2

SEE PAGE 57

31

SEE PAGE 33

SEE BOOK 15, PAGE 22

PLAIN CITY CORP LIMITS